

Derby Railway Heritage Trail

Explore Derby's Historic Railway Legacy on a Self-Guided Walking Trail Through Derby's Rail Heritage

Start Location: Derby Train Station or The Brunswick Inn

Duration: 45–60 minutes

1. Derby Train Station

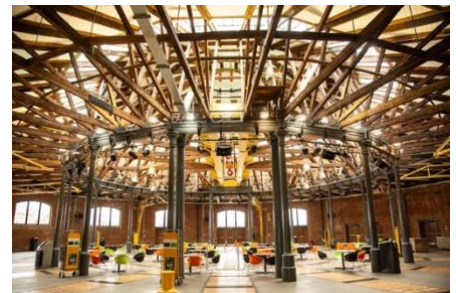
Your journey begins here! Opened in 1840, Derby Station was one of the earliest purpose-built stations in Britain. It became a key hub shared by three railway companies, making it unique for its time. Look out for the original Midland Railway crest and traces of Victorian architecture that still remain.



2. The Roundhouse

Originally built in 1839 by architect Francis Thompson, The Roundhouse was one of the world's first railway engine sheds and is a key piece of Derby's industrial heritage. Its circular design once allowed locomotives to be turned on a central turntable.

(Please note: currently not open for public entry)



3. Railway Workers' Cottages – North Street & Midland Place

These terraced homes were built in the 1840s to house Midland Railway staff. Designed for comfort and dignity, they show how the company supported its workforce. Keep an eye out for the unique curved brickwork and original sash windows.



4. The Waterfall (formerly Midland Railway Institute)

Now home to The Waterfall pub and event venue, this elegant redbrick building originally opened in 1894 as the Midland Railway Institute. It hosted night classes, lectures, concerts and social activities for railway workers – a symbol of social investment and lifelong learning.



5. The Brunswick Inn

Built in 1842 to serve railway workers and second-class passengers, this historic pub was restored in the 1980s and now brews its own award-winning beer. Still popular today, it offers a cosy atmosphere with original features and railway character.



6. The Alexandra Hotel

Conclude your trail at this historic pub, a short walk from Derby Station. Established around 1890 and named after Princess Alexandra, it served railway workers and enthusiasts alike. Inside, you'll find a cozy atmosphere adorned with railway memorabilia, including photographs and signs. Notably, a Class 37 locomotive cab resides in the car park .



Bonus Stops

- **Famous Trains Model Railway** – A short walk or ride away in Markeaton Park, for train lovers of all ages.

Open every Saturday, Sunday and Monday ([see opening information](#)) from 11am to 4pm.

Museum Of Making – Explore Derby's rich industrial story in this modern museum built on the site of the world's first factory. Discover how Derby's engineering legacy shaped global innovation – from rail to Rolls-Royce.

Open Tuesday to Sunday, 10:00 AM – 5:00 PM (Closed Mondays)

Railways Revealed – Catch the working model railway exhibition at 11:00 AM and 2:00 PM, Tuesday to Sunday. It brings Derby's railway heritage to life with impressive detail and historical insight.

- **Derby Market Hall** – Designed by Rowland Mason Ordish, who also worked on the roof of London's St Pancras Station, this impressive Victorian structure was built using materials sourced from Derby. It has recently undergone a £35 million renovation and is now home to independent food, drink, and shopping.

Open Mon–Wed 8am–3pm, Thurs–Sat 8am–10pm, Sun 11am–3pm

Please check opening times before visiting.